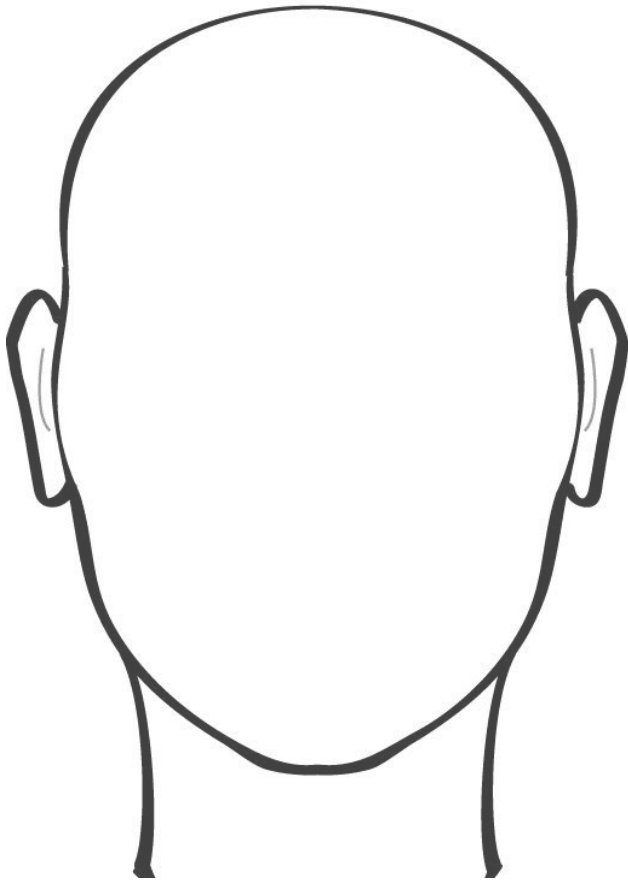


Name: _____ TEST Date: _____ Period: _____

DIRECTIONS: Draw a face in the template shown here, being careful to ensure that proportions are correct and anatomy is appropriate. Include detailed contours of eyes, eyebrows, nose, mouth, and hair. Then map out the planes of the face and neck using planar analysis. DO NOT shade or add any value.



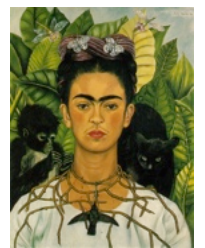
A head is shaped like an _____.

The face in theory is _____
 (a type of balance). Eyes are approximately
 _____ down the face. A
 face is approximately _____ to
 _____ eyes wide. There should be one
 _____ distance between each
 eye. The nose is approximately one
 _____ wide. The
 mouth is approx. as long as the distance
 between the center of the
 _____. The ears stretch from
 the top of the _____ to the
 bottom of the _____.

Artist Name:

What did she do to her features?:

Why is she Surrealist?



Artist Name:

Painting Style/Technique:

What point of view did he typically paint his face and why:

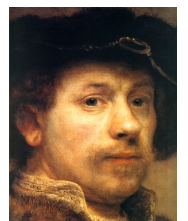


Artist:

When did he paint self-portraits?

Used what type of value?

What was the texture of paint on his canvas?



Directions: Label all the parts of the Facial Features on the lines provided for your below. Pay particular attention to exactly what part of face the arrow is pointing to. Write clearly please.

