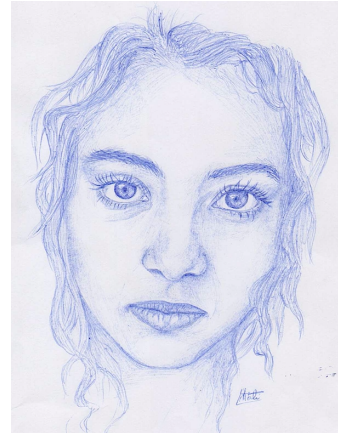


Ballpoint Pen Portrait

Due: _____



Size: 8.5" x 11" cardstock

Medium: Use graphite pencil for the initial layout, and finish with ballpoint pen in black, blue, or multicolor ink.

Parameters: Draw a portrait of an important person in your life using ballpoint pen to create a full value range in a variety of mark-making styles. This could be a friend, family member, teacher, etc. It must include a background that is a reflection of their character.

1) Take photographs of this person in a characteristic pose/environment that speaks to their personality or place in your life, and choose the best photo to recreate in your drawing. If the loved one is deceased, pick the best photo you have that includes strong values. Make sure you have a clear light source that provides distinct shadows and highlights so it is easier for you to replicate the values. Include at least the torso and head, if not a full body.

2) Print out a full-page picture if you can, so that you can bring your image in for Ms. Miller's help during tutoring.

3) Layout your image in graphite pencil first, lightly. Please review your drawing with Ms. Miller to ensure that you have the right proportions. You may grid the photo if you wish, but the drawing image must take up the full page.

4) Then use ball point pen mark making, such as contour, hatching, cross-hatching, and cross contour to add value/depth. The background must have at least contour line to delineate the space and objects.

5) Finish by erasing any graphite through the pen (it will not smear if it is dry) and evaluate yourself using the form provided below. Attach the form to the back of your drawing and turn in.



Ballpoint Pen



Rollerball

Ballpoint Pen: A pen that dispenses ink (in paste form) over a metal ball tip at its end. The world's most widely used writing instrument, it was originally developed as a cleaner and more portable solution to the traditional dip/calligraphy pen. Do not confuse them with Rollerball Pens, as those have a more pointed tip and typically use opaque gel ink that is more fluid. Rollerball pens do not allow for variation in line weight and line value. They also take longer to dry. Check with me if you are unsure if your pens are correct for this project.



What I am looking for:

Excellent use of drawing techniques to layout forms and values accurately

Value range is superior, convincing, subtle mid-values as well as lights and darks

Values are created using a variety of line-work: contour, hatching, cross-hatching, cross contour.

Equal attention paid to positive and negative space, even if background is reduced to contour line only

Considerable time and effort have been invested and clearly evident

Drawing is neat, carefully constructed, and finished looking

Convincing structures/forms and high level of detail including accurate proportions and likeness

