

NAME: _____

SECTION: _____

PERIOD: _____

FINAL EXAM STUDY GUIDE (due: _____)
Exam is during Finals Week!

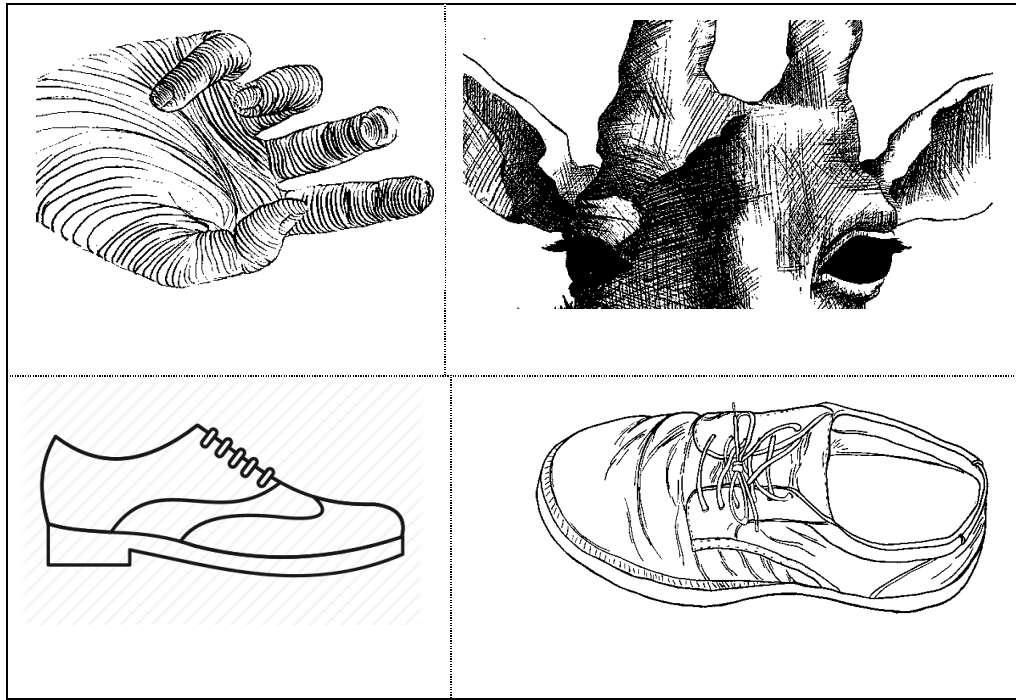
Directions: Color the monochromatic value scale below using one pure color (hue), white (the white of the page), and black. Make sure it goes from light (left) to dark (right), with the white square being pure white, the pure color rectangle being pure color, and the black rectangle being pure black.



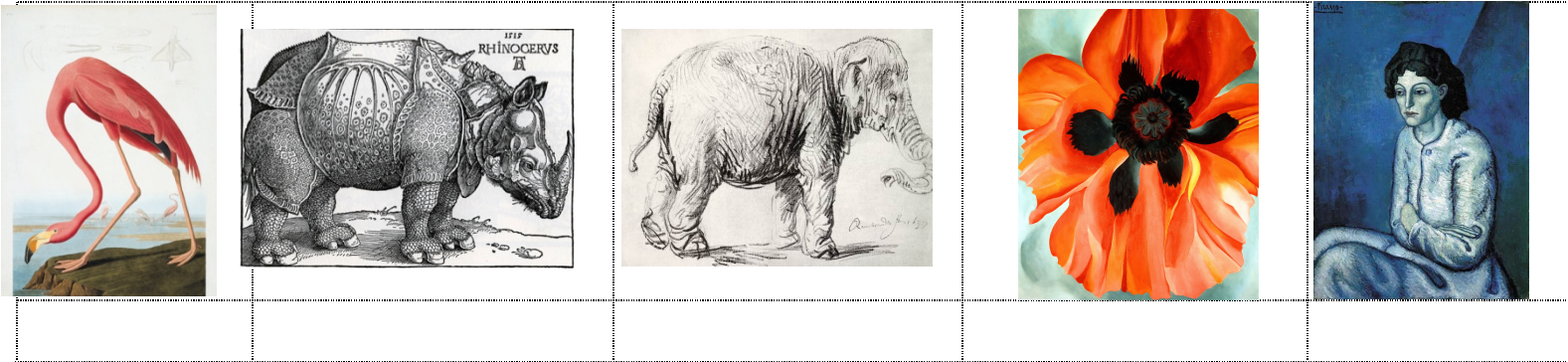
Directions: List the four drawing steps:

Directions: Identify four types of line shown below by labeling the boxes.

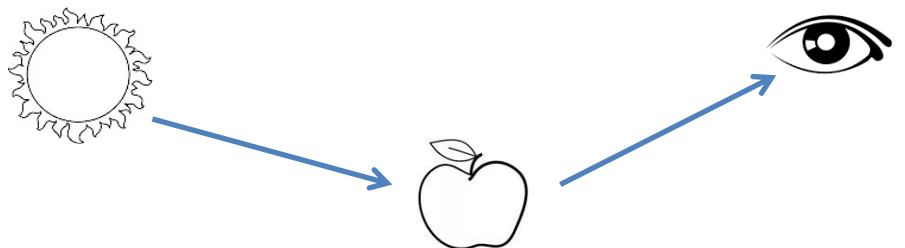
	The Drawing Steps
1)	
2)	
3)	
4)	



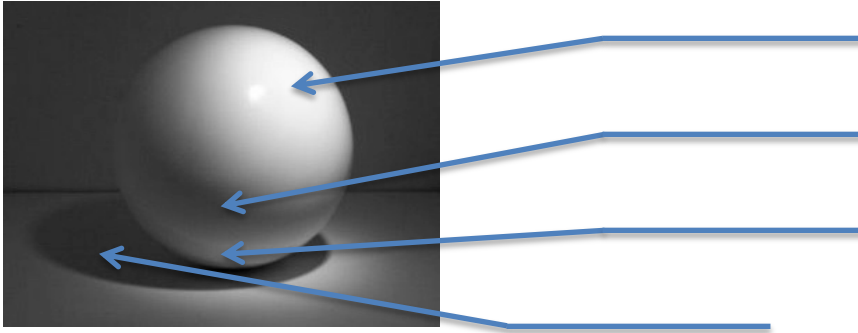
DIRECTIONS: Identify the artists of the following images by writing the last names in the boxes below:



DIRECTIONS: Complete the diagram here by labeling the colors coming from the sun and the colors reflecting off the red apple.



DIRECTIONS: For the sphere below label the value names in the blanks on the right.



DIRECTIONS: Fill in the blanks with the correct color names and terms.

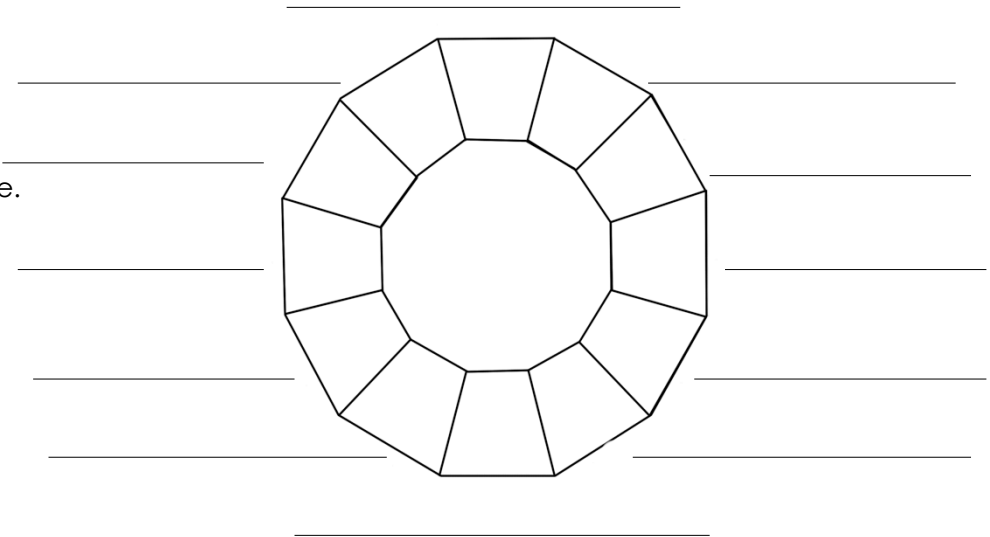
- The three primary colors are _____, _____, and _____.
- List the ELEMENTS OF ART: _____

- Why is a (HB) pencil better for finer lines than a (4B) pencil? _____
- Write the equations for all three secondary colors: _____ + _____ = Violet
_____ + _____ = Green _____ + _____ = Orange
- What was the name of the tool and the type of ink that we used for our shoe drawings? _____
- Write the general equation for tertiary colors: _____ + _____ = Tertiary
- What is the difference between how an outline makes a drawing look versus a contour line?

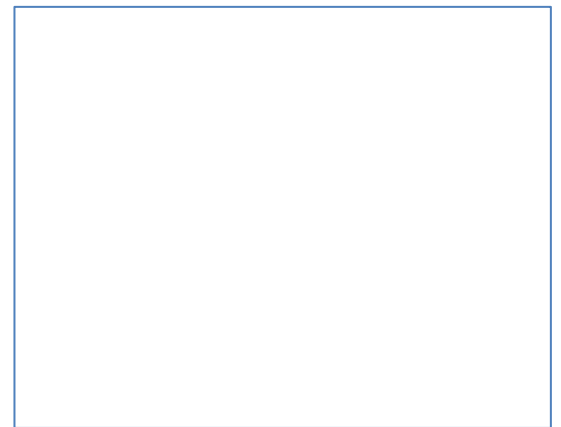
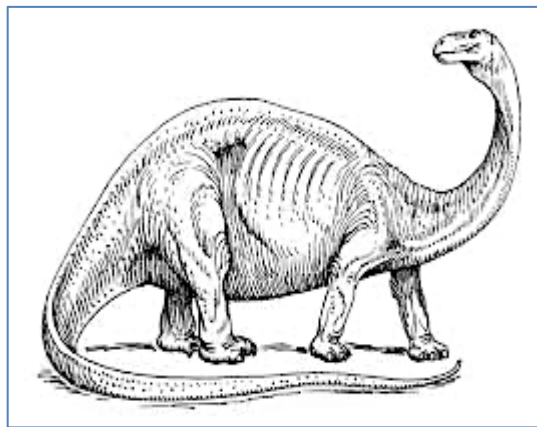
- List the three main complementary color pairs: _____ and _____
_____ and _____ _____ and _____
- What is the one thing to remember when using white and black charcoal pencils together? _____
- What is the value of toned paper (generally) ? _____
- Mixing complementary colors together creates a: _____.
- In color temperature: _____ colors advance, _____ colors recede.
(fill in either the words "warm" or "cool").
- Who invented the first color wheel? _____
- The original color wheel explained the relationship between color and light. The current color wheel explains the relationship between _____.
- List three analogous colors in order: _____
- What is the term for mapping out values as a series of shapes or planes? _____
- What is it called when you make a drawing by removing material, like scratchboard? _____

DIRECTIONS: Color each hue on the Color Wheel in the correct order neatly and darkly. You do not need to scumble. Then label each hue on its corresponding line.

Do not forget hyphens in tertiary color names!



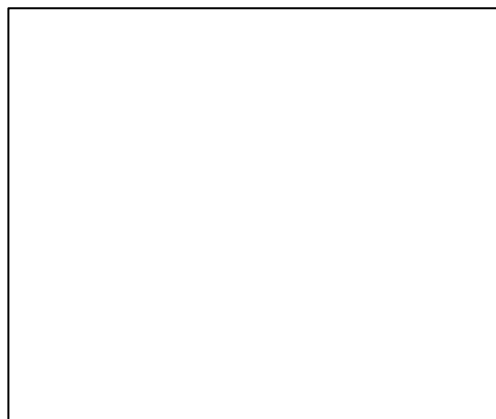
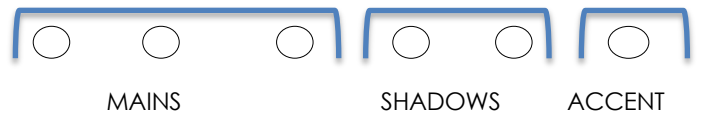
DIRECTIONS: Copy the drawing you see here using your drawing steps and without erasing them. Then finish the drawing with contour line only. Then copy the marks used in the reference to create texture and value.



DIRECTIONS:

- 1) Draw the flower image provided for you inside the box below using your drawing steps. You can erase them later.
- 2) Color the flower in colored pencil using one of the color schemes we learned (not monochromatic).
- 3) Label your color scheme below. Fill in the bubbles of the mains, shadow(s) and accent colors you will use.
- 4) Use your different colors to layer and shade smoothly, including background.
- 4) Use CONTOUR LINE to finish all of the edges and CROSS CONTOUR for edges.

YOUR COLOR SCHEME IS: _____



You must bring the following to class on the day of the exam for points on the test:

1. at least 12 colored pencils
2. 1 wooden #2 Pencil
3. 1 large eraser